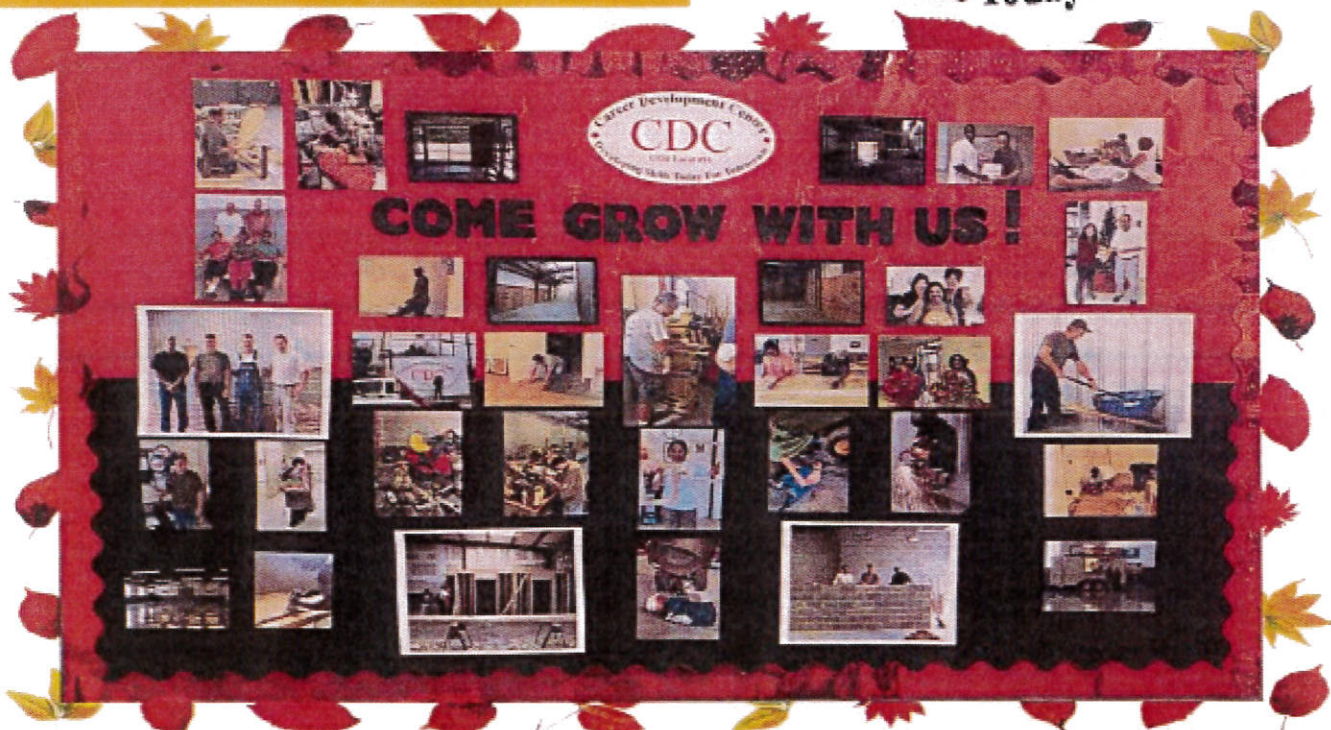
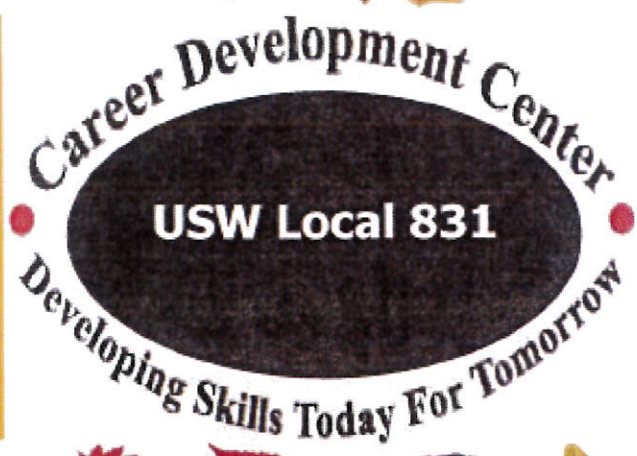


**FALL 2022
COURSE
SCHEDULE**



2353 Riverside Drive
Danville, Virginia 24540
434-792-1670
cdcdanville.com



The USW Local 831-Career Development Center is a union-negotiated benefit for our Goodyear hourly workers. The classes that are taught at our Center are at no cost to you.

In addition, all hourly employees have \$2,500.00 of Tuition Assistance available for any classes you would like to take from an accredited college or university. Online classes included!

CALL US TODAY TO GET STARTED!



2353 Riverside Dr.
Danville, VA 24540
Phone: (434)792-1670
Fax: (434)792-1671
Website: www.cdcdanville.com
Facebook: USW Local 831 Career Development Center

The Career Development Center is *YOUR* Union Negotiated Benefit. We offer Customized Courses at our Center that are *FREE* to active and retired employees and their spouses. There may be some out of pocket expenses for personal supplies for some of the classes; a list will be supplied before the class begins. The customized courses are based on interest that is communicated to the Site Coordinators and/or our Local Governing Board (LJC). We are currently going through some changes due to new state regulations that have been implemented due to the pandemic. We look forward to getting the Career Development Center going again and growing to its potential to have as many classes of interest as possible to benefit and serve our Union Members.

The Career Development Center also offers Tuition Assistance to the active employees and retirees for one year from their retirement date. Tuition Assistance is \$2,500.00 per calendar year, January 1st—December 31st, to apply toward course tuition and required books. The courses can be for credit toward a degree or certification; it can also be used for self-edification courses, such as the motorcycle safety course at Danville Community College. Classes may be taken in a classroom setting or online as long as the learning center is *ACCREDITED*. If there is any question of the learning centers' accreditation, we will be more than happy to help look into it and help with any other questions to help you reach your educational and training goals.

There are new things happening at the Career Development Center. We are now able to offer customized classes at other Career Development Center and International Career Development Center sites. As the courses become available, we will post them on our Facebook page and our Website. Registration for those courses will be done through our center, but because the courses will be offered at other sites there will be registration deadlines. We will also continue to add courses to our program as we will be partnering with new vendors to increase the amount and types of courses we will be able to offer. We will post updates as they become available. If there is a course you are interested in, please let us know.

We look forward to having everyone return and welcoming new participants to the USW Local 831 Career Development Center.

Sincerely,
Kathy and Gina

Career Development Center Contact Information:

Site Coordinators:

Gina B. Fox gfox@cdcdanville.com
Kathy H. Patterson kpatterson@cdcdanville.com

Local Governing Board (LJC):

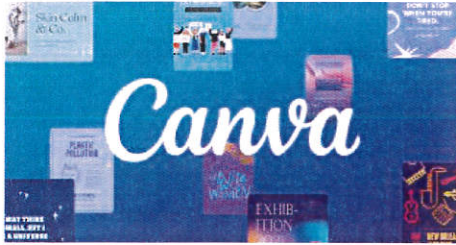
Pete Morton—USW Local 831 President
Larry Hook
Jimmy Newcomb
Shermaine Parker
Sean Poole



Custom Courses

Section 1: Classes are scheduled on A & C Shift off days.

Section 2: Classes are scheduled on B & D Shift off days.



Create graphics for newsletters, posters, brochures, postings on Social media and much more.

CANVA-Digital Design:

Section 1 - 10:30-12:30 pm
Alternating Tuesdays & Thursdays,
Oct. 11—Nov. 17, 2022

Section 2 - 5:30-7:30 pm
Alternating Tuesdays & Thursdays,
Oct. 13—Nov. 15, 2022

Computer Skills:

Section 1 - 3:30-5:30 pm Alternating Tuesdays & Thursdays, Oct. 11—Nov. 17, 2022

Section 2 - 8:30-10:30 am Alternating Tuesdays & Thursdays, Oct. 13—Nov. 15, 2022



Genealogy:

Section 1 - 8:30-10:30 am Alternating Tuesdays & Thursdays, Oct. 11—Nov. 17, 2022

Section 2 - 3:30-5:30 pm Alternating Tuesdays & Thursdays, Oct. 13—Nov. 15, 2022

MS Excel:

Section 1 - 5:30-7:30 pm Alternating Tuesdays & Thursdays,
Oct. 11—Nov. 17, 2022

Section 2 - 10:30-12:30 pm Alternating Tuesdays & Thursdays,
Oct. 13—Nov. 15, 2022

Uses Of MS Excel

Education

Business

Goal Setting and Planning

Business Owners

Manage Household Expenses

Data Analysis/Data Science

Daily Progress Report

Career Development

STATANALYTICA.COM

HOLIDAY CARDS AND CALENDAR GIFTS

CHRISTMAS CARDS

Section 1 - 3:30-5:30 pm, Tuesday, November 22, 2022

Section 2 - 8:30-11:30 am, Tuesday, November 29, 2022

2023 FAMILY CALENDAR

Section 1 - 5:30-8:30 pm,
Tues., Nov. 22 & Thurs., Dec. 1, 2022

Section 2 - 11:30-2:30 pm, Tues.,
Nov. 29, & Thurs., Dec. 8, 2022



L&O classes are Career Development Classes offered by the JobLink and Leon Lynch Learning Centers which are recorded and available to other sites via streaming technology. When you sign up for a class that is recorded, you can watch the class live from a remote location or access the class after the session, on demand.
Current Courses: <http://careerdevelopmentchannel.org/index.html>



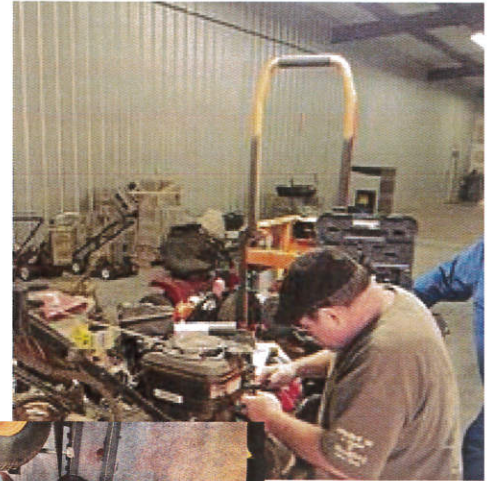
Carpentry:

Section 1 - 12:00-2:00 pm
 Alternating Mondays & Wednesdays,
 Oct. 10—Nov. 16, 2022
 Section 2 - 7:00-9:00 pm
 Alternating Mondays & Wednesdays,
 Oct. 12—Nov. 14, 2022



Small Engine Repair:

Section 1 - 5:30-8:30 pm
 Alternating Mondays & Wednesdays, Oct. 10—Nov. 30, 2022
 Section 2 - 5:30-8:30 pm
 Alternating Mondays & Wednesdays, Oct. 12—Dec. 12, 2022



Welding:

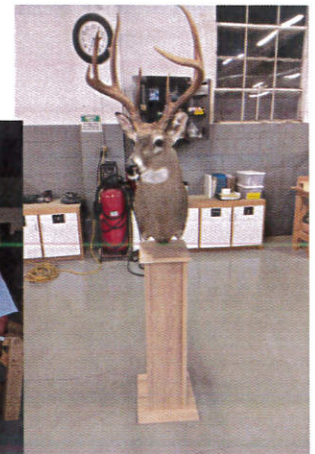
***First Come First Serve - Limit of 4 participants per time section.**
****Participant will be required to bring their own personal welding and safety supplies.**

Section 1A - 8:30-10:30 am Alternating Mondays & Wednesdays, Oct. 10—Nov. 30, 2022
 Section 1B - 10:30-12:30 pm Alternating Mondays & Wednesdays, Oct. 10—Nov. 30, 2022
 Section 1C - 12:30-2:30 pm Alternating Mondays & Wednesdays, Oct. 10—Nov. 30, 2022
 Section 1D - 2:30-4:30 pm Alternating Mondays & Wednesdays, Oct. 10—Nov. 30, 2022

Section 2A - 8:30-10:30 am Alternating Mondays & Wednesdays, Oct. 12—Dec. 12, 2022
 Section 2B - 10:30-12:30 pm Alternating Mondays & Wednesdays, Oct. 12—Dec. 12, 2022
 Section 2C - 12:30-2:30 pm Alternating Mondays & Wednesdays, Oct. 12—Dec. 12, 2022
 Section 2D - 2:30-4:30 pm Alternating Mondays & Wednesdays, Oct. 12—Dec. 12, 2022

Woodworking:

Section 1 - 8:30-11:30 am Alternating Mondays & Wednesdays, Oct. 10—Nov. 30, 2022
 Section 2 - 3:30-6:30 pm Alternating Mondays & Wednesdays, Oct. 12—Nov. 28, 2022



Tuition Assistance

Active employees and retirees up to one year of retirement date are eligible for up to \$2,500.00 per year (Jan.– Dec.) at an accredited school. The tuition assistance can be used for course tuition and required books. Tuition assistance cannot be used towards course equipment, supplies or testing fees. Tuition assistance will not pay for fail, dropped, withdraw or repeated courses. It is the participants responsibility to let the Career Development Center know if they have withdrawn from a course.

College and or trades classes can be for credit or for self edification as long as they are taken at an accredited learning site. If you are not sure of a sites accreditation we will help look into the information. The courses can be in person and/or online.

To apply for tuition assistance a Career Development Center Tuition Assistance Application (can be printed from our website) must be completed and turned into the office (email/fax/drop off in mailbox) along with the participants course registration from the school/learning site. If the participants paid for the courses or books out of pocket we will need the completed application, course registration and receipts and will refund the participant normally within two weeks.

*If you have college credits from years ago, DON'T let them go! They can still be used to complete degrees and achieve those goals.

*Most college credits will transfer from college to college; don't feel like you have to start over.

*An investment in you is an investment in your future.

*IT'S NEVER TOO LATE!



Access to LinkedIn Learning, an on-demand learning solution designed to help you gain new skills and advance your career. You will receive a customized learning experience that features instructional content relevant to your professional interests and goals. Call the Career Development Center and learn how you can use your tuition assistance to utilize all of these LinkedIn learning resources.

With LinkedIn Learning, you get:

- Unlimited access. Choose from more than 5,000 video tutorials, covering business, creative and technology topics.
- Personalized recommendations. Explore the most in-demand skills based on your experience.
- Expert instructors. Learn from industry leaders, all in one place.
- Convenient learning. Access courses on your schedule, from any desktop or mobile device.
- Helpful resources. Reinforce new knowledge with quizzes, exercise files, and coding practice windows.



ICD Educational Partners



ABTU is dedicated to providing skill-focused education and training to participants and their families. ABTU supports "Debt Free Education" by matching ICD funds with a dollar for dollar match. Books, software and tutoring are included at no additional cost. All lectures are delivered live, 100% online with 24/7 support to accommodate all shifts. Choose from over 100 courses of study. Classes start every 6 weeks.



Ashworth College offers two types of programs through its ICD partnership. Participants can take advantage of online, customized type classes at a rate of \$525 each under the "Career Programs" tab. In addition, under the "Degrees" tab, Undergraduate Degree and Certificate Programs are available for \$1440 per semester, and Masters programs are available at a rate of \$2500 per semester.



The United Steelworkers Institute for Career Development, as a member of the learning partner tuition discount program, can offer participants a 10% tuition discount and exclusive scholarship opportunities. Participants, along with spouses and children, are also eligible for additional services including no application fee, no evaluation fee, complimentary tutoring, flexible or structured enrollment systems, and all textbooks are provided at no cost through a CSU book grant.



ICD has a partnership with DeVry University and its Keller Graduate School of Management to bring you affordable, accredited degree programs with the flexibility you need for a work/life balance. ICD participants are eligible for a 15% reduction on any classes at DeVry University and Keller Graduate School.

Morgan Stanley

Morgan Stanley Financial Wellness provides members with resources covering a broad array of financial topics that provide the information individuals need to make confident, well-informed financial decisions. Through the ICD partnership with Morgan Stanley Financial Wellness, participants have access to online financial education and financial planning for a \$300 subscription. The online experience can help you and your family measure and improve your financial wellbeing, matching you with personalized journeys and educational materials that can help address your needs. Additionally, participants can collaborate with a Morgan Stanley Financial Advisor who will create a holistic portrait of your financial life and a customized plan to help pursue your goals.



Enroll with a school that helps 30,000+ people each year achieve their goals through affordable online education and training. Whether you're interested in building a new skill or furthering your career, Penn Foster can help by providing you access to high-quality career and college courses. Penn Foster's easy-to-use learning platform gives you access to books and study materials on the go, helping you learn when and where you want, at your own pace. Check out the [100+ accredited Career Certificate and Diploma programs](#) and [100+ College Courses and Degrees](#) available to you through Penn Foster's partnership with ICD.



Rosetta Stone® provides complete language solutions for beginner, intermediate, and advanced learners in both English and World Languages. Rosetta Stone® offers personalized, online learning experience based on a learner's proficiency and goals in 24 languages and includes live online tutoring. Partnership with ICD gives ICD participants exclusive access to the Rosetta Stone® Catalyst™ Language Solution for 12 months.



Tooling U-SME delivers versatile, competency-based learning and development solutions to manufacturing, working with over half of all Fortune 500® manufacturing companies, plus educational institutions across the country. A division of SME, Tooling U-SME partners with customers to build high performers who help their companies drive quality, productivity, innovation, and employee satisfaction. Participants can subscribe to the entire library for 3 months (\$200) or 12 months (\$500).

****The Beautiful thing about Learning is that no-one can ever take it away from you.
B. B. King*



Customized Class Registration Form

*Only one class registration form per class.

Name: _____

Address: _____

City: _____ State: _____ Zip Code: _____

Telephone Number – Home: _____ Cell: _____

Email: _____

Yes No

Please check if we have permission to contact and distribute information to you by email. Your email address will not be used for any other purpose or given to a third party.

Date of Birth: _____

Active Employee		Shift:	Clock Card #
Retired Employee		Date of Retirement:	Clock Card #
Active Spouse			Spouse Clock Card #
Retired Spouse			Spouse Clock Card #

Emergency Contact Information: (Optional)

Name and Relationship: _____

Telephone Number(s): _____

Course Name	Section	Start Date	Completion Date

***Classes are filled on a first come, first served basis. If a participant misses 2 classes without notifying the CDC, their spot will be given to the next person on the waiting list.

Confidentiality Statement

All information received from you by the Career Development Center is Considered "Confidential Information." Confidential Information will Remain under lock and key at all times when not in use and will not be Released to anyone without your written consent.

UISW Local 831L Career Development Center, 2353 Riverside Drive, Danville, Virginia 24540
 Phone (434) 792-1670 · Fax (434) 792-1671 · Website: www.cdcdanville.com